



Easy Chess Puzzle # 0028

By

G Bud Games
<https://gbud.in>

September 30, 2021

Contents

1	Easy Chess puzzle # 0028 - Unpin your queen	3
1.1	Easy chess puzzle 0028	4
1.2	Solution to easy chess puzzle 0028	4
1.2.1	Solution 1	5
1.2.2	Right moves for the solution to the easy chess puzzle 0028	6
1.2.3	Explanation for the moves	6
1.3	Categories of easy chess puzzle 0028	7
1.4	How to view the solution to easy chess puzzle 0028	7
1.5	How to get help for moves in the easy chess puzzle 0028	7
1.6	Play chess for free	9

List of Figures

1.1	Solve this easy chess puzzle 0028. Unpin your queen @ https://gbud.in/gbvjdj21	4	
1.2	Solve this chess puzzle online with solution @ https://gbud.in/gbvjdj21	4	4
1.3	Initial board position of easy chess puzzle 0028	5	
1.4	f3 - This will protect the queen from the bishop's attack. The queen was unable to move because it will expose the king to check. This condition is called as a pin. Moving the king is another option but not recommended since your queen will be captured by the bishop	6	
1.5	Click the solution button to view solutions @ https://gbud.in/gbvjdj21	7	
1.6	Click the help button to get help on next move @ https://gbud.in/gbvjdj21	8	
1.7	Solve more easy puzzles @ https://gbud.in/chsezpz	8	
1.8	Solve other puzzles @ https://gbud.in/chsgppz	8	
1.9	Play chess online for free. Solve puzzles and play with friends	9	
1.10	Solve this puzzle online by scanning this QR code or go to the link below	10	

Chapter 1

Easy Chess puzzle # 0028 - Unpin your queen

Solve this easy chess puzzle and improve your chess games through improvement of your chess strategies and chess tactics.

Puzzle No : 0028

Difficulty level : Easy

Description : Unpin your queen

Next Move : White

Player level : Beginner

Short URL for puzzle : <https://gbud.in/gbvj21>

1.1 Easy chess puzzle 0028

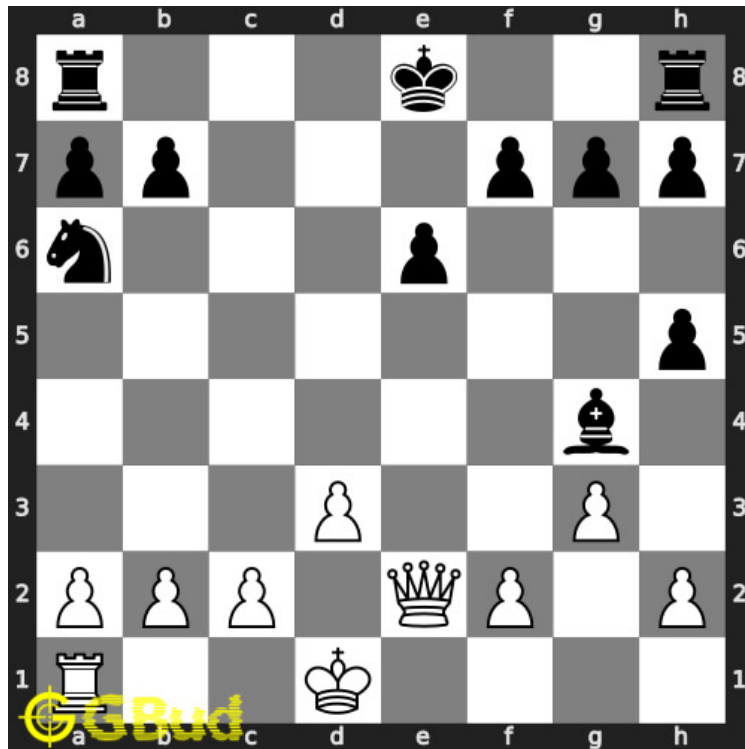


Figure 1.1: Solve this easy chess puzzle 0028. Unpin your queen @ <https://gbud.in/gbvjdj21>



Figure 1.2: Solve this chess puzzle online with solution @ <https://gbud.in/gbvjdj21>

1.2 Solution to easy chess puzzle 0028

At this puzzle, next **move** is by **White**. The objective of the puzzle is to unpin your queen.

See the interactive solution at the [puzzle page](#)

1.2.1 Solution 1

1.2.1.1 Initial board position

This is the initial board position of easy chess puzzle 0028.

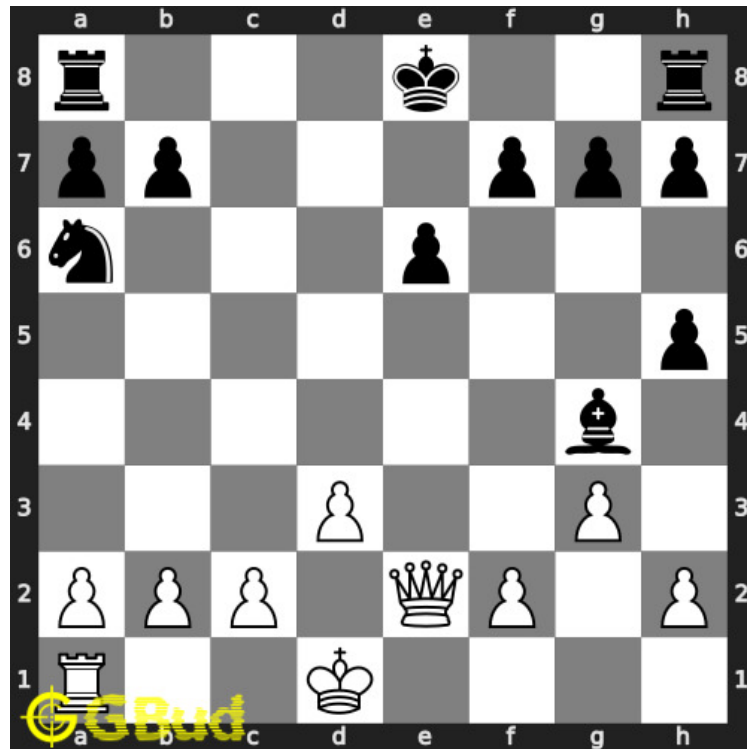


Figure 1.3: Initial board position of easy chess puzzle 0028

1.2.1.2 Move 1

Move by white

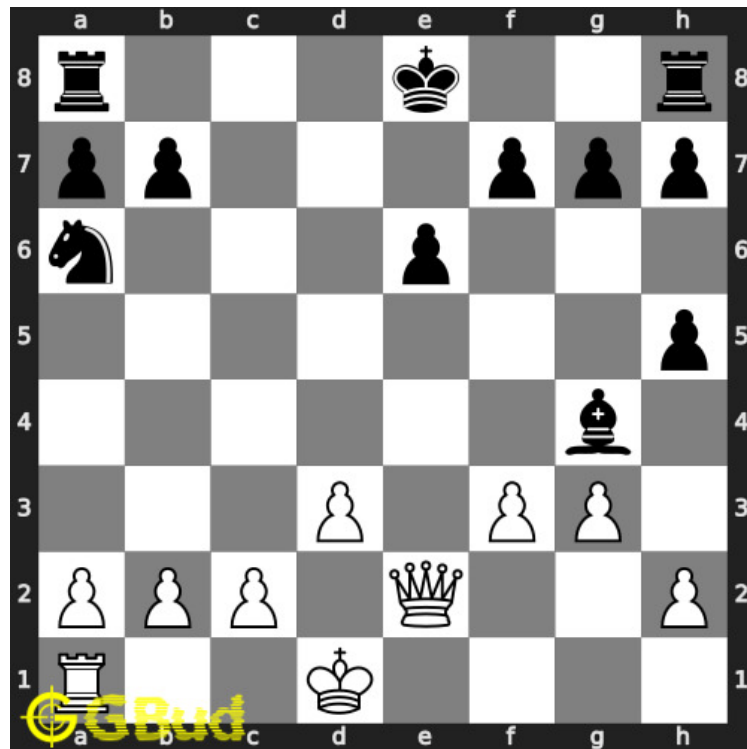


Figure 1.4: f3 - This will protect the queen from the bishop's attack. The queen was unable to move because it will expose the king to check. This condition is called as a pin. Moving the king is another option but not recommended since your queen will be captured by the bishop

1.2.2 Right moves for the solution to the easy chess puzzle 0028

Based on the objective of the puzzle, you have to make the right moves. Following are the right moves

1. f3

1.2.3 Explanation for the moves

1. f3 - This will protect the queen from the bishop's attack. The queen was unable to move because it will expose the king to check. This condition is called as a pin. Moving the king is another option but not recommended since your queen will be captured by the bishop
2. For right move - You saved your queen otherwise it would be attacked by the bishop. Now the bishop is forced to move from g4
3. For wrong move - You will lose your queen as the bishop will capture it.

1.3 Categories of easy chess puzzle 0028

This easy chess puzzle falls in these categories.

1. [Easy chess puzzles](#)

1.4 How to view the solution to easy chess puzzle 0028

To view the [solution to this puzzle](#), follow the steps given below

1. Go to the [puzzle page](#)
2. Click the solution button (Key as shown [below](#)) to view the solution



Figure 1.5: Click the solution button to view solutions @ <https://gbud.in/gbvjdj21>

1.5 How to get help for moves in the easy chess puzzle 0028

To get help or the possible next moves in the puzzle, , follow the steps given below

1. Go to the [puzzle page](#)
2. Click the help button (exclamation mark as shown [below](#)) to get help or suggestion on next possible [move](#)



Figure 1.6: Click the help button to get help on next move @ <https://gbud.in/gbvjdj21>



Figure 1.7: Solve more easy puzzles @ <https://gbud.in/chsezpz>



Figure 1.8: Solve other puzzles @ <https://gbud.in/chsgppz>

1.6 Play chess for free



Figure 1.9: Play chess online for free. Solve puzzles and play with friends

Play chess for free at <https://gbud.in/chs>

We present you a platform to play chess online with friends for free. No need to install any app. You can play chess for free without registration or login.

Simple. You can do several chess related activities.

1. solve chess puzzles
2. learn about chess
3. play chess with computer
4. play chess with friend
5. create your own chess games
6. fen viewer
7. fen editor
8. fen generator
9. pgn viewer
10. chess board editor
11. view famous chess games.



Figure 1.10: Solve this puzzle online by scanning this QR code or go to the link below

<https://gbud.in/gbvjdj21>

Read the latest article on Easy Chess puzzle # 0028 - Unpin your queen by scanning this QR code or click the link

Previous article : « [Easy Chess puzzle # 0027 - Avoid stale mate](#)

Next article : [Easy chess puzzles](#) »

[Back to top](#)

[Contact Us](#)

© GBud Games 2021